

POPULATION OVERVIEW

DATA BRIEF RELEASE: September 2022

Fiscal Year 2021/2022

Data Source: Ontario Health



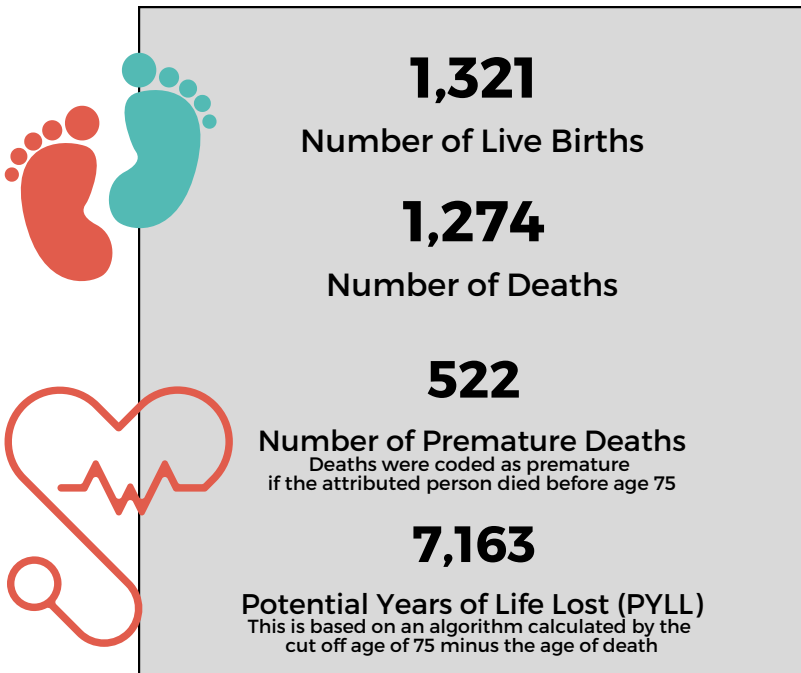
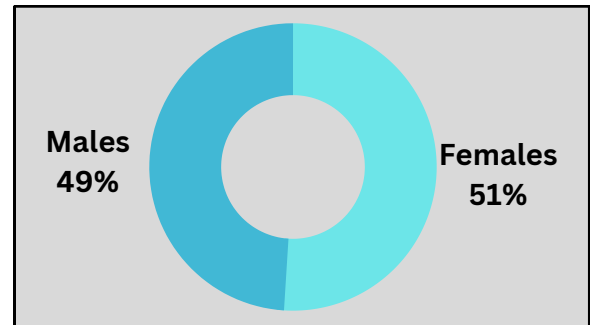
152,367

Attributed Population

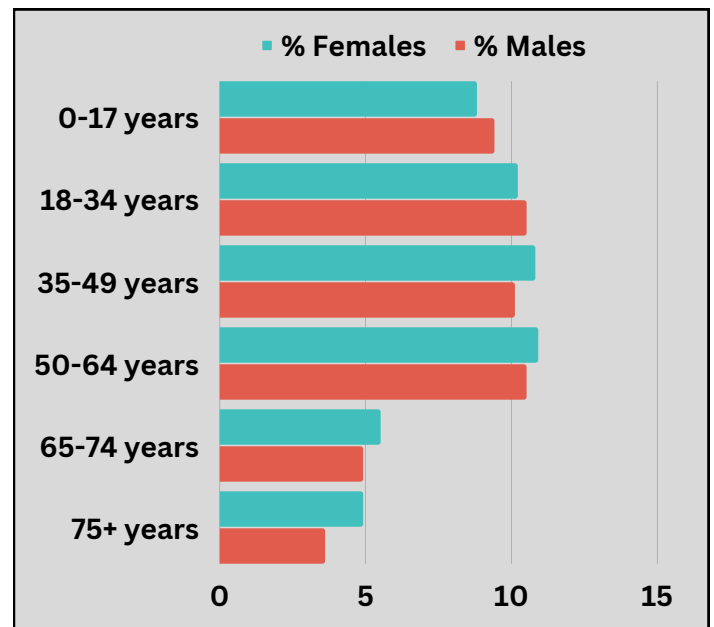
Our attributed population reflects where patients access care, not where they live



Sex Distribution in CND OHT



Age Distribution by Sex in CND OHT



The CND OHT is using data to inform care redesign efforts to meet the needs of our attributed population. For further information or questions, please contact Lindsay Beuermann, Performance Monitoring and Quality Lead or visit our website.



lindsayb@langs.org



cndoht.com